

# ExitCare Handouts

**Presented by Mirian Smith**  
**June 1, 2010**



Authorized Partner  
GE Healthcare  
Centricity Physician Office



# Agenda

---

- Introduction to ExitCare Handouts
- Overview of Transition to ExitCare
- Phase One
- Phase Two
- Updating Handout Custom List
- Pricing



Authorized Partner  
GE Healthcare  
Centricity Physician Office

# Introduction to ExitCare Handouts

---

- June 29, 2009, GE announced the purchase of ExitCare Handouts
- ExitCare Handouts will be replacing McKesson/CRS Handouts
- ExitCare will be required starting 2011 or sooner if handout expires before January 2011
- **All** EMR customers will be required to have Exit Care installed even if they do not utilize handouts
- 3,000 Titles with the addition of more Spanish titles



Authorized Partner  
GE Healthcare  
Centricity Physician Office



# Introduction to ExitCare Handouts (cont)

---

- Clinical Information based on evidence-based medicine and guidelines
- Reading levels from 2<sup>nd</sup> to 8<sup>th</sup> grade
- 30% of titles include illustrations
- Common format including:
  - Clear and concise information
  - Bulleted advice
  - Homecare advice
  - When to call or seek medical care
- New titles added quarterly



Authorized Partner  
GE Healthcare  
Centricity Physician Office



# Overview of Transition to ExitCare

---

- Content affected with installation of ExitCare included:
  - Handout custom list (excluding handouts created by your clinic)
  - Encounter forms
  - QuickText
- Identify clinical content in production, mainly handout custom list
- Install and run report provided to assist with handout custom list
- Export kits that include the clinical content with CRS references



# Overview of Transition to ExitCare (Cont)

---

- Import clinical kit into Demo or training database
- Install ExitCare on Demo or training database
- Update your clinical content to replace CRS with ExitCare.
- Export new kits containing updated content
- Install latest Knowledgebase update and ExitCare to the production database
- Import the updated clinical content



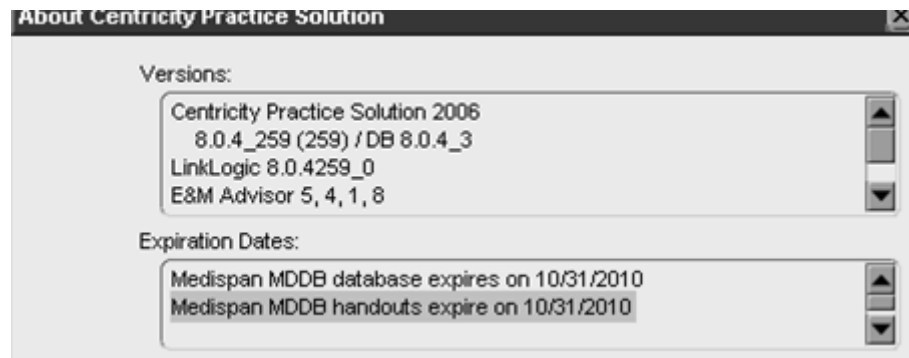
Authorized Partner  
GE Healthcare  
Centricity Physician Office



# Phase One

---

- Notify HealthSystems of when your handouts expire
  - In the chart module, select Help
  - Select About Centricity Practice Solution
  - Under the section “Expiration Date”, note the Medispán Handouts Expire



# Phase One (Cont)

---

- Send a request to HealthSystems to begin process to install ExitCare
- Scheduling will be on a first-come-first-serve basis with preference to clients with handouts expiring before the end of the year
- HealthSystems will proceed with the following:
  - Install or update demo database
  - Run CRS custom handout list report
  - Export kits including custom handout list from production
  - Import kits into demo database
  - Email the handout report with a cross reference file for CRS to ExitCare



Authorized Partner  
GE Healthcare  
Centricity Physician Office





# Phase Two

---

- Client will update custom handout list using the CRS handout report and cross reference file
- Client will notify HealthSystems when handout custom list is complete
- HS will schedule a time to access production database to install the latest knowledgebase update and ExitCare
  - This will take approximately two hours and **all users will need to be out of the production database**
- HS will import new custom list into the production database

# Updating Custom List

---

- Note that if you use CCC handout custom lists and have not significantly customized them, HealthSystems can import the new CCC custom list from GE
- Otherwise, you will need to update the CRS references in CCC custom lists along with any other custom lists you use



Authorized Partner  
GE Healthcare  
Centricity Physician Office



# Updating Custom List (Cont)

---

- **CRS Custom List Report**
  - Custom List Name
  - Handout Name
  - Handout Folder Path
  - English ID
  - Spanish ID
- **Cross Reference File**
  - CRS Handout Name
  - CRS ID
  - CRS Advisor Name and ID
  - Matching ExitCare Handout Title



Authorized Partner  
GE Healthcare  
Centricity Physician Office



# Updating Custom List (Cont)

---

- Report
  - Select English ID or Handout Name
- Cross Reference File
  - Highlight CRS ID Column
  - Edit – Find or Ctrl F
  - Enter ID #
  - Find Next
- Demo Database
  - Administration-Handout-Custom List
  - Go-Setup-Settings-Handout-Custom List
  - Select Custom List
  - Under List Contents, select New



# Updating Custom List (Cont)

---

- Demo Database
  - Administration-Handout- Custom List
  - Go-Setup-Settings-Handout-Custom List
  - Select Custom List
  - Under List Contents, select New
  - Use Search or Browse feature
  - Select new handout
  - Select Ok



Authorized Partner  
GE Healthcare  
Centricity Physician Office



# Pricing

---

- Option One

- HS will complete task listed in Phase One and Two
- Customer will recreate custom list
- Price – \$500

- Option Two

- HS will complete task listed in Phase One and Two
- HS will recreate custom list
- Price - \$1000



Authorized Partner  
GE Healthcare  
Centricity Physician Office



# Questions and Answers

---



**Thank you for attending!**  
**Mirian**



Authorized Partner  
GE Healthcare  
Centricity Physician Office

